

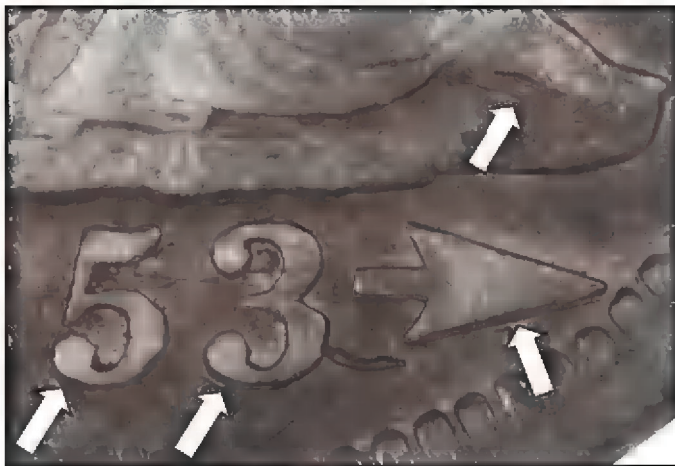
A New Doubled Die 1853 Arrows and Rays Quarter

by Harry E. Smith, LSCC #566



At a recent Long Beach show, Robert Clark, our esteemed West Coast LSCC representative who dutifully mans our club table at the show, showed me a newly purchased 1853 Arrows and Rays quarter dollar (shown above). Bob's keen eye noted some doubling in the lower right quadrant of the obverse. Closer inspection revealed it to be a new doubled die obverse.

This new Class V¹ pivoted and doubling variety has a date .4 mm below the base of the rock that slopes slightly upward to .38 mm below (0.40-0.38-0.40-.038). The right upright of the '1' points between



shield lines 5/6. The most obvious doubling is on the sole of Miss Liberty's sandal, which is doubled below its entire length. The right arrow is doubled below the shaft and lower side. The '3' is doubled from below the lower ball along most of the lower edge, with doubling also visible on the lower side of the inner middle point. Very faint doubling is visible below the inside upper curve of the '3.' The '5' shows light doubling from below the lower ball along most of the lower edge. There may be light doubling below the tip of the upright in the '5' and below the '8' that is not certainly evident on this VF30 example.

Other notable die characteristics are a series of four long die scratches running upward and very close to the dentils between stars 11 and 12. A very faint die crack runs from just to the left tip on the upper side of the right arrow to the 3rd dentil above the dentil at the point of the arrow tip. The reverse die appears perfect.

Bob's intense study of Liberty Seated coinage again proves there are still many more meaningful discoveries to be made if you take the time to look!

Special thanks to Bob for entrusting me to write about this interesting variety and to Bill Bugert for his expert photography in illustrating it.

¹ Wexler, John. *Wexler's Coins and Die Varieties*, <http://www.doubledie.com/203927.html>. "...With a Class V doubled die, the point of rotation or pivot point will be somewhere along the rim of the hub/die alignment. Because of this, the Class V doubled dies will exhibit doubling that is spread either CW or CCW."