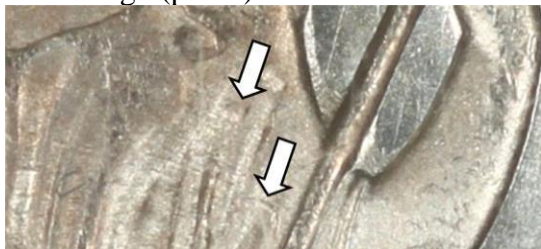


New Die Marriage 1876-CC WB-37, Large CC

Obverse 27



- Date high (photo)



- Small lump on Liberty's upper right torso below the lower hair curl and curved lint mark on Liberty's upper right forearm to left of pole (photo)
- Die crack thru the base of digits 18 of the date into the left field (see photo above)



- Diagonal file line from the dentil below star 1, thru star 1 to star 2 (photo)

Reverse H



- Large CC with wide spacing and CCs slanting up (upper left photo)
- Small lump in the field between (UNITE)D and the scroll edge (upper right photo)



- Small lump to upper left of (TRU)S(T) on scroll (photo – also note die cracks)



- VLDS: die damage above, thru, and below UNIT(ED) not seen on previous use of this die
- VLDS: heavily cracked die (see photos above and on the next page)
- This reverse die is transitional with 1871-CC (reverse D) and 1872-CC (reverse C).

This is the only use of this obverse die and second use of this reverse die in 1876.

This die marriage was discovered by Jack Marston and is very proof-like.

Date grid: M3, .018"	Unknown reeds	Typical diameter = Unknown"	Rarity - 7
Drapery die state: Full	Foot support: Strong	Denticles: Obverse - Full; Reverse - Full	
Grade of coin depicted: PCGS MS64 (proof-like)		Coin from the Jack Marston collection	
Cross reference: WB-103.		July 2010, Version 1.0	

1876-CC
WB-37, Large CC (Discovery Coin)



Obverse 27



Reverse H