

New Die Marriage 1876-CC

WB-41, Medium CC (Discovery Coin)

Obverse 1



- Date right (photo)

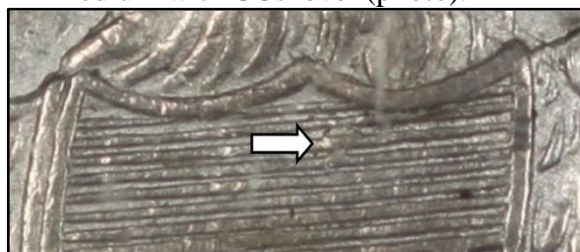


- Thick diagonal line behind Liberty's eye (photo)
- Scattered die lines in the rock support from Liberty's foot
- Weak center dot in Liberty's lap
- Raised oblong lint mark on the rock to the left of shield
- Very rusty die; heavy rust lumps on Liberty
- Die crack thru stars 5-6 to head to cap to star 8

Reverse G



- Medium CC with wide spacing, placed medium with CCs level (photo).



- Large lump in the upper horizontal shield lines (photo)



- Small lumps in the recessed area between olive leaves #3 and #4
- Weak die crack along top of letters (AM)ERI(CA)
- Weak tail feathers below shield

This is the second use of this obverse die and second use of this reverse die.

Brian Greer discovered this die marriage with coin PCGS #28124873.

| | | | |
|-----------------------------------|----------------------|---|------------|
| Date grid: M4.7, .028" | Unknown reeds | Typical diameter = Unknown" | Rarity - 7 |
| Drapery die state: Full | Foot support: Strong | Denticles: Obverse - Full; Reverse - Full | |
| Grade of coin depicted: PCGS XF45 | | Coin from Bill Bugert Collection | |
| Cross reference: WB-102. | | November 2013, Version 1.0 | |

1876-CC
WB-41, Medium CC (Discovery Coin)



Obverse 1



Reverse G