

**New Die Marriage
1876-CC
WB-38, Medium CC**

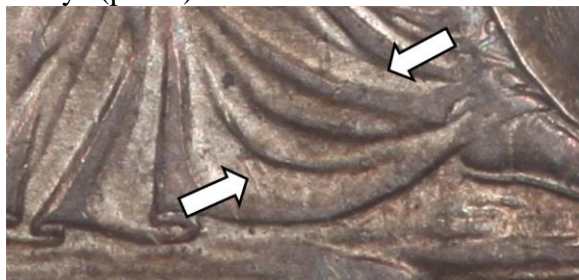
Obverse 8



- Centered date with die crack thru bottom of the digits of the date (photo)



- Thick diagonal die line behind Liberty's eye (photo)



- Scattered lumps and lines in Liberty's gown (photo); other on Liberty's chest and neck area
- Die crack around the complete circumference; thru all stars, rock support, and date

Reverse O



- Medium CC with close spacing, placed high with level CCs (photo)

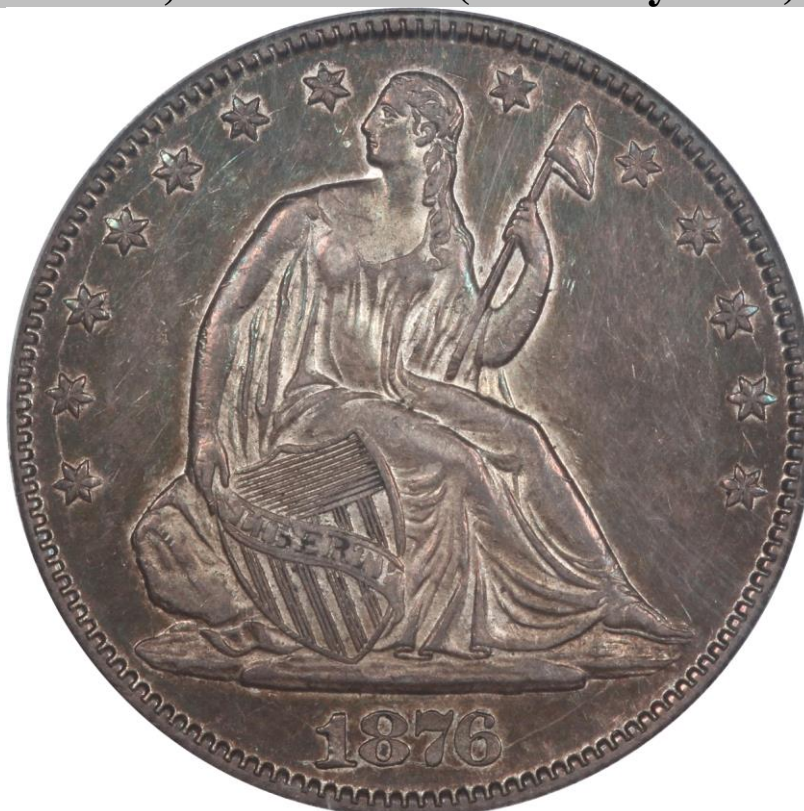


- Horizontal and parallel die lines to the left of the upper arrow feathers below shield (photo)
- Die uncracked

This is the third use of this obverse die and first use of this reverse die in 1876. A revised emission sequence for this die combination is WB-12 (8I), WB-13 (8J), WB-38 (8O), and then WB-19 (14O). This die marriage was discovered by Barry Stallard at the 2011 Chicago ANA bourse.

Date grid: M2.5, .033"	Unknown reeds	Typical diameter = Unknown"	Rarity - 7
Drapery die state: Full	Foot support: Strong	Denticles: Obverse - Full; Reverse - Full	
Grade of coin depicted: PCGS AU55		Coin from the Barry Stallard collection	
Cross reference: WB-103.		August 2011, Version 1.0	

1876-CC
WB-38, Medium CC (Discovery Coin)



Obverse 8



Reverse 0