

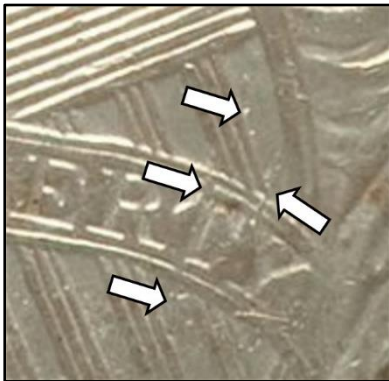
New Die Marriage 1875-S

WB-23, Very small S (Discovery Coin)

Obverse 2



- Centered date slightly slanting down to the right (photo). Heavy die crack along the base of the date.

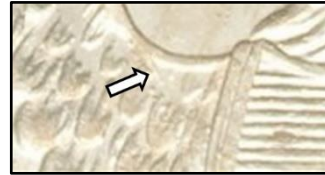


- Heavy die damage diagonally thru the shield and scroll (photo)
- Die cracks around the entire circumference (see enhanced die crack diagram on next page)

Reverse O



- Very small S mintmark (photo).



- Diagonal die line in the eagle's upper left wing near the shield (photo)



- Horizontal die line to the left of W(E) (photo)
- Weak upper scroll edge above (TR)UST
- Weak tail feathers below shield
- Die cracks thru legend (see enhanced die crack diagram on the next page)

This is the second use of this obverse die and second use of this reverse die.

This die marriage was noted as unlisted in the auction description.

All photographs are from Heritage Auction Sale 8/2012:8422.

Date grid: M4, .020"	Unknown reeds	Typical diameter = Unknown"	Rarity - 7
Draperies die state: Full	Foot support: Weak	Denticles: Obverse - Full; Reverse - Full	
Grade of coin depicted: NGC MS63 #358156-005		Coin from Heritage Auction 8/2012:8422	
Cross reference: WB-101.		August 2012, Version 1.0	

1875-S
WB-23, Very small S (Discovery Coin)



Obverse 2 (enhanced die crack diagram at right)



Reverse O (enhanced die crack diagram at right)